

# Integrated Extrusion Control Gives You the Complete Picture

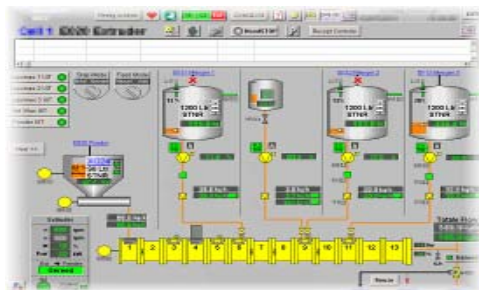
Alba's extruder automation solutions put you firmly in control of your extrusion process. Whether you are looking to upgrade an existing unit to improve control and throughput, or install new equipment, Alba will provide a solution that's right for you.

## Integration



At Alba, we recognise that while controlling the extruder is a core part of the extrusion process, tightly integrated control of both the up- and downstream equipment is also crucial to producing on-spec material with minimum waste and maximum throughput. We offer a range of solutions, including:

- Full automation of new lines, from feed vessels right through to packaging
- Integration of existing, separate extruder, feeds and packaging systems into a unified solution
- Co-existent systems that work alongside OEM extruder control systems, giving you the option of using turnkey systems from the leading extruder manufacturers, while still gaining the benefits of a completely integrated production line.



## Our Abilities

Thanks to Alba's work on several major extrusion projects, often working alongside major extruder manufacturers, we can offer a completely integrated solution that gives not only automated extruder control, but full control of the entire extrusion line, including:

- Chillers
- Tank farms
- Pre-mixer and mixer vessels
- Raw material feeds
- Powder handling
- Extruders
- Water baths / vacuum
- Air knives
- Pullers
- Cutters
- Packaging

We can advise on the best control system that suits your plant or we can convert our solutions to virtually any modern system you may have in place, making it easier for you and your team to support it and to help keep costs down.



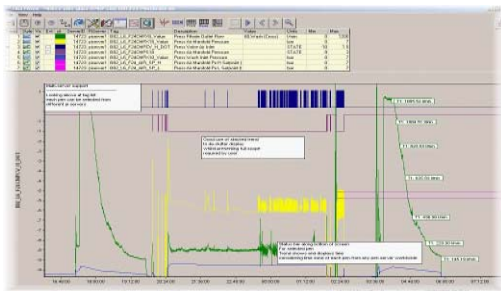
Capabilities

# Integrated Extrusion Control

## Staying Informed

Alba recognises that high reliability and uptime are key factors in running any process effectively. That's why we make sure you have all the information you need to get a clear picture of how your plant is running.

We can integrate your process with plant information products like OSIsoft's PI and GE Fanuc's iHistorian products to allow for historical data collection and analysis. We can also develop advanced solutions using these products to give KPI, OEE, material balance and predictive maintenance information, which will help you to get maximum performance from your plant. We can even publish the information through a secure intranet portal like Microsoft Sharepoint Portal Server 2003, allowing you to give people in your company direct access to the information they need using nothing more than their PC's web browser.



And it doesn't end there. Alba can provide integration with lab management systems to pull in quality results for historical logging, allowing you to analyse production trends more easily. We can also interface the production system with supply chain systems, for raw materials and final product tracking, or provide our own solutions using technologies like RFID and barcode scanning.

We have also developed a custom extruder recipe system, which allows you to apply a customisable set of control variables for each product you make. This enables faster turnaround for different products and gives better consistency of the final product.

## Total Control

Alba's integrated extruder solutions will help your process to reach the highest levels of performance, flexibility and reliability. Whatever degree of integration you're looking for, Alba can provide the solution that's right for you.

© 2004 Alba Controls Ltd. All rights reserved. All other brands, names and logos are property and/or trademarks of their respective owners.



Capabilities